

Izzy Teddy Bear Dolls

a free knitting pattern by Esther Braithwaite
www.stitchandshare.weebly.com



Materials

Model is knit in KnitPicks Brava Sport on 2.75mm dpns

Basic Body (work in stocking stitch throughout)

Cast on 32 stitches with long-tail cast on method. Leaving an 8-inch tail for finishing. Arrange evenly on 4 needles. Join for working in the round.

Refer to chart or knit from pattern as follows:

LEGS

Rows 1-18 Knit in body colour

PLAIN SHIRT (or see cable and stripe options below)

Rows 19-30 Knit in contrast colour

FACE

Rows 31-42 Knit in body colour

Begin Shaping for Top of Head

Row 43: K1, *Knit 4 K2tog, repeat from * to last stitch, K1.

Row 44 (and alternate even rows): Knit

Row 45: K1, * Knit 3 K2tog, repeat from * to last stitch, K1.

Row 47: K1, * Knit 2, K2 tog, repeat from *to last stich, K1.

Row 49: K1, * Knit 1, K2 tog, repeat from *to last stich, K1.

Row 50: K1, * K2 tog, repeat from *to last stich, K1.

Draw yarn through remaining stitches and pull to close. Secure yarn.

To Finish Doll

Refer to chart for seam placement.

Stuff head. Sew a running of matching yarn across the first face row. Draw up to form neck and knot securely. Use ends to define arms as noted below.

Stuff body. Using long tail from cast on, sew a running stitch around first row of feet. Draw up to close doll.

Define legs. Using long tail from cast on, define legs with tiny backstitches through all layers - from bottom to beginning of bodice. Secure yarn.

This pattern is adapted from the Izzy Doll patterns available freely online for charity knitting.
The pattern is free for personal use, not for sale or profit.

Izzy Teddy Bear Dolls

a free knitting pattern by Esther Braithwaite
www.stitchandshare.weebly.com

Define arms. Using ends from neck seam, define arms with tiny backstitches through all layers - from 2 stitches below neck to waist. Secure yarn.

Embroider face. Using picture for reference, embroider face features in black yarn.

Attach Ears

Pick up 4 stitches from top of finished head. Join body colour.

Row 1-2 Knit

Row 3-4 Kfb, knit to end.

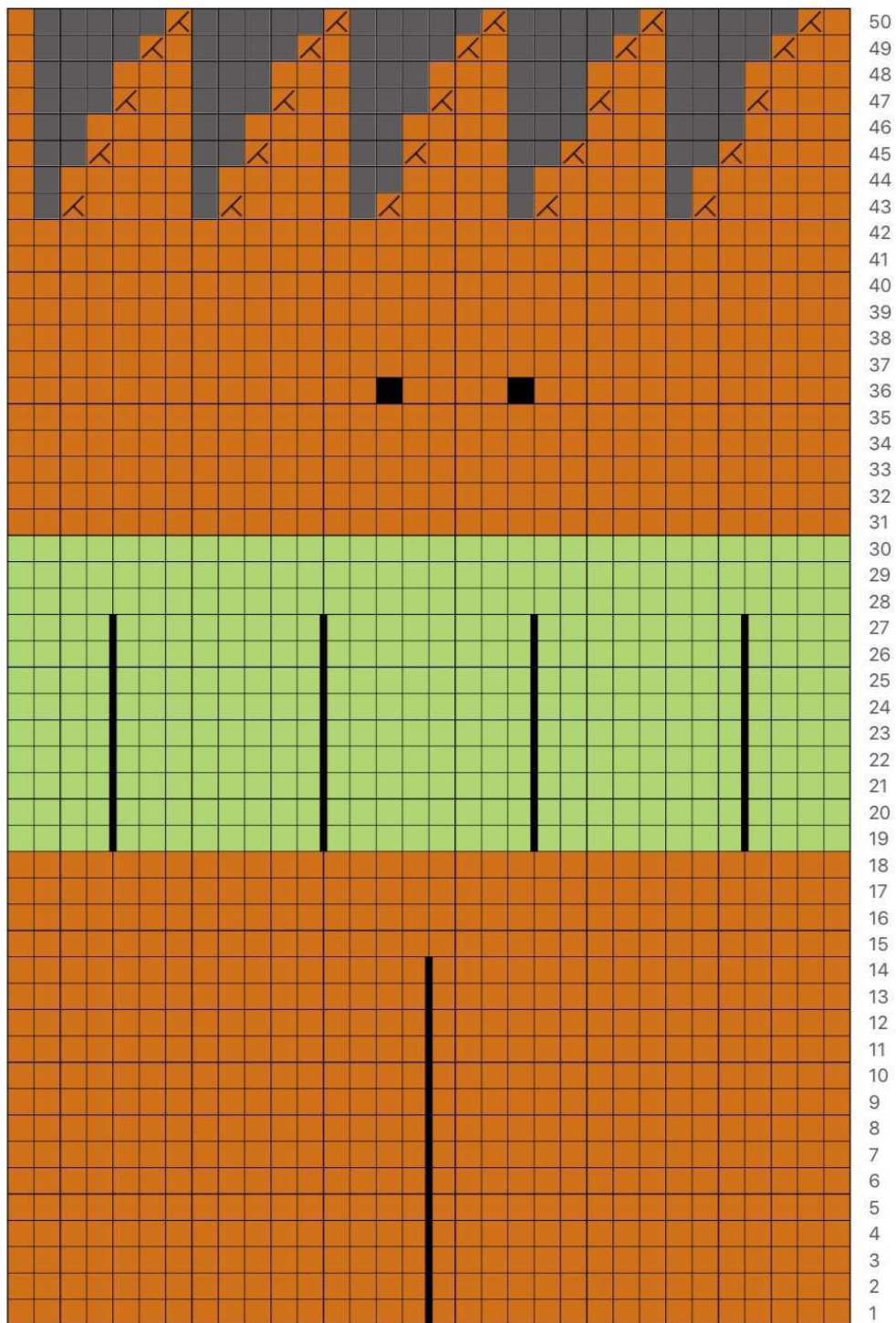
Row 5-6 K2tog, knit to end.

Thread working yarn through 4 live stitches and continue down ear through three edge stitches. Draw up yarn gently and tack to base of ear to 'curve.'



This pattern is adapted from the Izzy Doll patterns available freely online for charity knitting.
The pattern is free for personal use, not for sale or profit.

32 31 30 29 28 27 26 25 24 23 22 21 20 19 18 17 16 15 14 13 12 11 10 9 8 7 6 5 4 3 2 1



	No stitch
	Tog/K2 Tog

Fishbone Cable Sweater (Option A)

Row 19 Knit

Row 20 Knit 12, Purl 2, Knit 4, Purl 2, Knit.

Row 21 Knit 12, Purl 2, S11 to CN, hold in back, K1, K1 from CN, S11 to CN, hold in front, K1, K1 from cable needle. Purl 2, Knit to end.

Row 22-23 (repeat Row 20)

Row 24 (repeat cable Row 21)

Row 25-26 (repeat Row 20)

Row 27 (repeat cable Row 21)

Row 28-29 (repeat Row 20)

Row 30 (repeat cable Row 21)

Cable Sweater (Option B)

Row 19 Knit

Row 20 Knit 12, Purl 2, Knit 4, Purl 2, Knit to end.

Row 21 Knit 12, Purl 2, S11 to CN, hold in front, K3, K1 from CN, Purl 2, Knit to end.

Row 22-24 (repeat Row 20)

Row 25 (repeat cable Row 21)

Row 26-28 (repeat Row 20)

Row 29 (repeat cable Row 21)

Row 30 (repeat Row 20)

Chunky Cable Sweater (Option C)

Row 19 Knit

Row 20 Knit 12, Purl 1, Knit 6, Purl 1, Knit to end.

Row 21 Knit 12, Purl 1, Sl3 to CN, hold in front, K3, K3 from CN, Purl 1, Knit to end.

Row 22-24 (repeat Row 20)

Row 25 (repeat cable Row 21)

Row 26-28 (repeat Row 20)

Row 29 (repeat cable Row 21)

Row 30 (repeat Row 20)

Striped Sweater (Option D)

Row 19-22 Knit in green (or main sweater color of your choice)

Row 23 Knit in white (or contrast color of your choice)

Row 24 Knit in green (or main sweater color of your choice)

Row 25-26 Knit in white (or contrast color of your choice)

Row 27 Knit in green (or main sweater color of your choice)

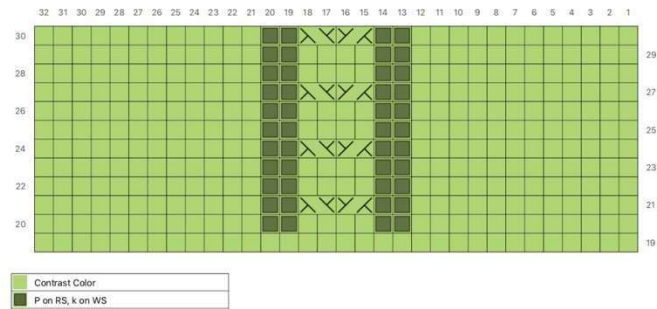
Row 28 Knit in white (or contrast color of your choice)

Row 29-30 Knit in green. (or main sweater color of your choice)

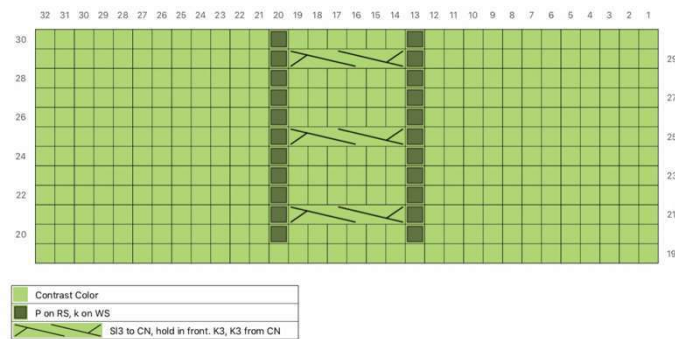
Jogless Join Tutorials: <https://www.youtube.com/watch?v=Dzvxz8t-uHw>

This pattern is adapted from the Izzy Doll patterns available freely online for charity knitting.
The pattern is free for personal use, not for sale or profit.

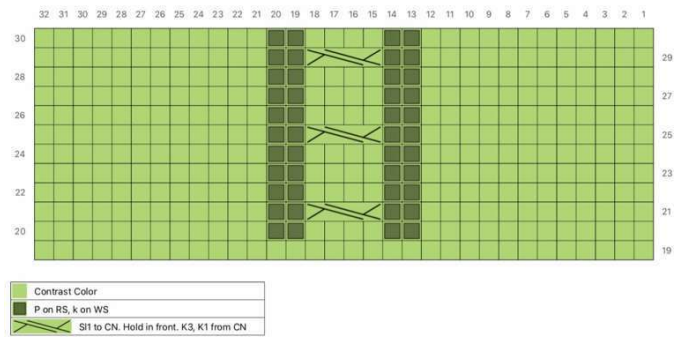
Cable Sweater Option A



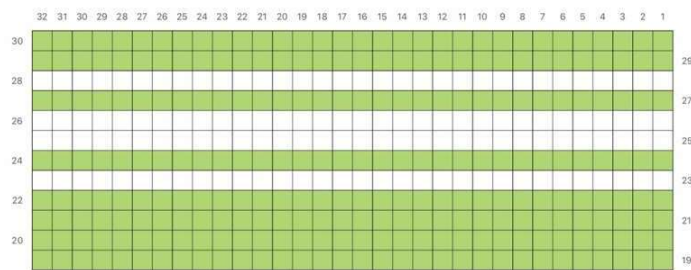
Cable Sweater Option C



Cable Sweater Option B



Striped Sweater



This pattern is adapted from the Izzy Doll patterns available freely online for charity knitting.
The pattern is free for personal use, not for sale or profit.



About the History of Izzy Dolls

In Canada, Izzy Dolls are knit in recognition and memory of Master Corporal Mark Isfeld, who lost his life to a landmine explosion in Croatia in 1994.

Mark's mother created the Izzy doll for his unit to share with children during their work in peacekeeping.

You can read more about his legacy here: <https://www.hpicanada.ca/izzy-dolls/mark-isfeld/>

Where to Donate

Variations of Izzy Dolls, sometimes called comfort dolls, are welcomed by many volunteer organizations both locally and overseas.

I support Health Partners International Canada with my dolls. HPIC uses the dolls instead of packaging material to protect medicines and medical supplies that are distributed to relief clinics in areas of need around the world. The dolls are then given to children who visit the clinics.

You can read more about the mission and impact of this organization here: <https://www.hpicanada.ca/>

This pattern is adapted from the Izzy Doll patterns available freely online for charity knitting. The pattern is free for personal use, not for sale or profit.

Izzy Teddy Bear Dolls (Flat Knitting Instructions)

This is meant as a supplement to the Izzy Teddy Bear Pattern by Esther Braithwaite for those not comfortable with knitting in the round. Please refer to the main pattern for finishing instructions.

K- Knit

P- Purl

S- Slip stitch as if to purl

K2tog- Knit 2 stitches together

CN- Cable Needle

Cast on: Loosely cast on 32 stitches in Body Color, leaving a 12" tail for seaming bottom.

Body & Head:

Legs (Using Body Color):

Row 1 (Right Side): Knit.

Row 2 (Wrong Side): Purl

Rows 3-18: Repeat rows 1 & 2 in body color. Cut yarn leaving a normal length tail

Plain Shirt (Using Contrast Color): For other shirt styles, work rows 19-30 according to specific alternative shirt instructions given on the last 2 pages of pattern.

Row 19: Knit.

Row 20: Purl

Rows 21-30: Repeat rows 1 & 2 in contrast color. Cut yarn leaving a normal length tail

Face (Using Body Color):

Row 31: Knit.

Row 32: Purl

Rows 33-42: Repeat rows 1 & 2 in body color.

Shaping top of head (Using Body Color):

Row 43: K1, (K4, K2tog) to last stitch, K1

Rows 44, 46, 48 & 50: Purl

Row 45: K1, (K3, K2tog) to last stitch, K1

Row 47: K1, (K2, K2tog) to last stitch, K1

Row 49: K1, (K1, K2tog) to last stitch, K1

Row 51: K1, (K2tog) to last stitch, K1

Draw yarn through remaining stitches and pull to draw together.
Secure yarn. When cutting yarn, leave an 18" tail to use for seam on back of bear.

Secure & weave in all ends from the sweater section.

Seam Bear:

Using tail from top of hat, sew the sides of the doll together with an invisible seam. This seam will be at the center of the back of the bear.

After seaming the bear, refer to the finishing instructions in the original pattern.

Alternate Shirt Options Worked Flat:

Spine Stitch Cable Sweater (Option A):

Row 19: Knit

Row 20: P12, K2, P4, K2, P12

Row 21: K12, P2, S1 to CN, hold CN to back, K1, K1 from CN, S1 to CN, hold CN to front, K1, K1 from CN, P2, K12

Row 22-30: Repeat Rows 20 & 21

Cable Sweater (Option B):

Row 19: Knit

Row 20: P12, K2, P4, K2, P12

Row 21: K12, P2, S1 to CN, hold CN to front, K3, K1 from CN, P2, K12

Row 22: P12, K2, P4, K2, P12

Row 23: K12, P2, K4, P2, K12

Row 24: P12, K2, P4, K2, P12

Row 25: K12, P2, S1 to CN, hold CN to front, K3, K1 from CN, P2, K12

Row 26: P12, K2, P4, K2, P12

Row 27: K12, P2, K4, P2, K12

Row 28: P12, K2, P4, K2, P12

Row 29: K12, P2, S1 to CN, hold CN to front, K3, K1 from CN, P2, K12

Row 30: P12, K2, P4, K2, P12

Chunky Cable Sweater (Option C):

Row 19: Knit

Rows 20, 22, 24, 26, 28 & 30: P12, K1, P6, K1, P12

Row 21: K12, P1, S3 to CN, hold CN in front, K3, K3 from CN, P1, K12

Row 23: K12, P1, K6, P1, K12

Row 25: K12, P1, S3 to CN, hold CN in front, K3, K3 from CN, P1, K12

Row 27: K12, P1, K6, P1, K12

Row 29: K12, P1, S3 to CN, hold CN in front, K3, K3 from CN, P1, K12

Striped Sweater (Option D):

Row 19: Knit in shirt color

Row 20: Purl in shirt color

Row 21: Knit in shirt color

Row 22: Purl in shirt color – **do not cut yarn**

Row 23: Knit in white (or desired contrast color)- **do not cut yarn, do not turn work**

Row 24: **(RS)** Knit in shirt color- **do not cut yarn, turn work**

Row 25: **(WS)** Purl in white (or desired contrast color)- **turn**

Row 26: **(RS)** Knit in white (or desired contrast color)- **do not cut yarn, turn**

Row 27: **(WS)** Purl in shirt color- **do not cut yarn, do not turn work**

Row 28: **(WS)** Purl in white (or desired contrast color)- **cut yarn & turn**

Row 29: **(RS)** Knit in shirt color

Row 30: **(WS)** Purl in shirt color- **cut yarn & turn**