

GROWING LEAVES SHAWL



Growing Leaves Shawl knits up quickly with only one skein of sock yarn. The pattern is worked from the top center down, using yarn overs to give it its crescent shape. The leaves of the center triangle are getting bigger towards the bottom of the shawl. The sides are held in garter stitch before they end in a leaf border. Size: inner circumference c. 140 cm / 55 inches, depth c.30 cm / 12 inches (after blocking).

Materials

C. 400m / 440 yards of fingering yarn. Sample shown in DyeForYarn Merino Silk Superwash Fingering – Ground Sapphire
1 circular needle 3.5 mm / US 4
2 stitch markers

Set up rows

Cast on 3 stitches. Knit 6 rows in garter stitch. This produces 3 garter stitch ridges on each side of your work.

Pick-up row: Knit 3, turn work clock-wise, pick up 3 stitches along garter stitch edge (one in each of the 3 garter stitch ridges), turn work 90 degrees clock-wise again, then pick up 3 stitches along cast-on edge (9 stitches total).

R 1: k3, yo, k1, yo, k1, yo, k1, yo, k3

R 2: k3, kfb into yo, k2, p1, k2, kfb into yo, k3

R 3: k3, yo, k3, pm (place marker), yo, k3, yo, pm, k to last 3 stitches, yo, k3

R 4: k3, kfb into yo, k to maker, slm (slip marker), k1, p to 1 st before marker, k1, slm, knit to last 4 stitches, kfb into yo, k3

R 5: k3, yo, k to next marker, slm, yo, k to next marker, yo, slm, k to last 3 stitches, yo, k3

R 6: k3, kfb into yo, k to maker, slm, k1, p to 1 st before marker, k1, slm, knit to last 4 stitches, kfb into yo, k3

R 7+8: Repeat rows 5 and 6 (33 stitches total)



Part 1 – Chart A

Chart A is knitted in the center section of the shawl, while the sides are worked in garter stitch:

RS rows: k3, yo, k to marker, slm, yo, Chart A, yo, slm, k to last 3 stitches, yo, k3

WS rows: k3, kfb into yo, k to maker, slm, k1, p to 1 st before marker, k1, slm, knit to last 4 stitches, kfb into yo, k3

Rows 35 and 36 are knitted as follows:

R 35: k3, yo, k3, yo, *k4, yo,*repeat from * to * to marker, slm, yo, Chart A, yo, slm, *k4, yo,*repeat from * to * to last 6 stitches, k3, yo, k3

R 36: k3, kfb into yo, k to maker knitting into back loops of yo's to avoid holes, slm, k1, p to 1 st before marker and pfb into yo's, k1, slm, k to last 4 sts knitting into back loops of yo's to avoid holes, kfb into yo, k3

You will have 141 sts on the needle, 45 in each section and 3 edge sts on each side.

Part 2 – Chart B

The second part is very similar to the first one:

RS rows: k3, yo, k to marker, slm, yo, Chart B, yo, slm, k to last 3 stitches, yo, k3

WS rows: k3, kfb into yo, k to maker, slm, k1, p to 1 st before marker, k1, slm, knit to last 4 stitches, kfb into yo, k3

Rows 69 and 70 are knitted as follows:

R 69: k3, yo, k6, yo, *k5, yo,*repeat from * to * to 6 sts before marker, k6, slm, yo, Chart B, yo, slm, k6, *yo, k5*repeat from * to * to last 9 stitches, k6, yo, k3

R 70: k3, kfb into yo, k to maker knitting into back loops of yo's to avoid holes, slm, k1, p to 1 st before marker and pfb into yo's, k1, slm, k to last 4 sts knitting into back loops of yo's to avoid holes, kfb into yo, k3

You will have 285 sts on the needle, 93 in each section and 3 edge sts on each side.

Part 3 – Charts C, D and E

At this point, you should have at least 55% of your yarn left. If you think you don't have enough yarn, you may omit the following rows: rows 87/88 and/or 71/72, rows 109/110 and/or 107/108. Each double row omitted will save c. 3-4 grams of fingering yarn. Attention, this will change the number of edge stitches compared to the charted pattern.

Part 3 extends the lace pattern to all sections of the shawl in order to create a leaf border.

RS rows: k3, yo, Chart C, slm, yo, Chart D, yo, slm, Chart E, yo, k3

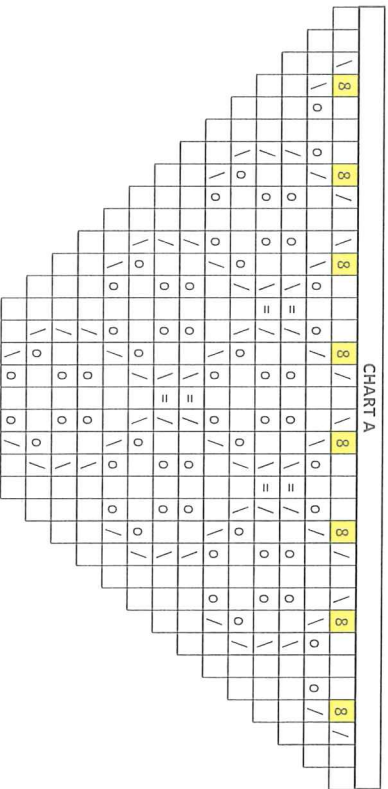
WS rows: k3, kfb into yo, p/k as indicated in Chart to next marker, slm, k1, p to 1 st before marker, k1, slm, p/k as indicated in Chart to last 4 stitches, kfb into yo, k3

Bind off

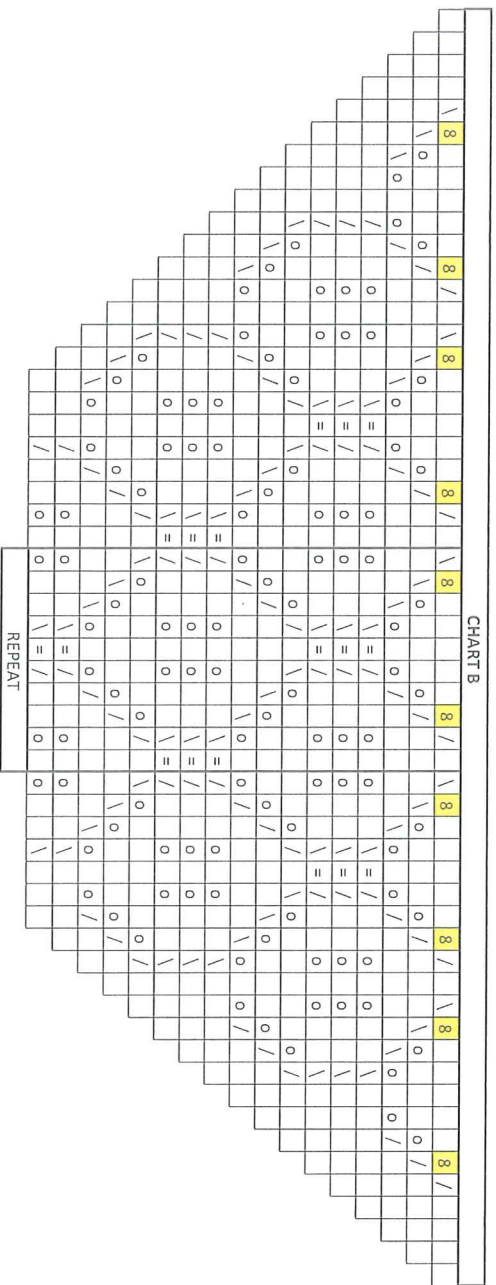
Knit 2 sts. *Slip the sts purlwise back on the left-hand needle. Knit these 2 sts together through the back loops. Knit next st. Repeat from * until 2 sts remain. Knit these 2 sts together through the back loops, cut yarn and pull the tail through the last stitch. Weave in yarn ends, soak and block.



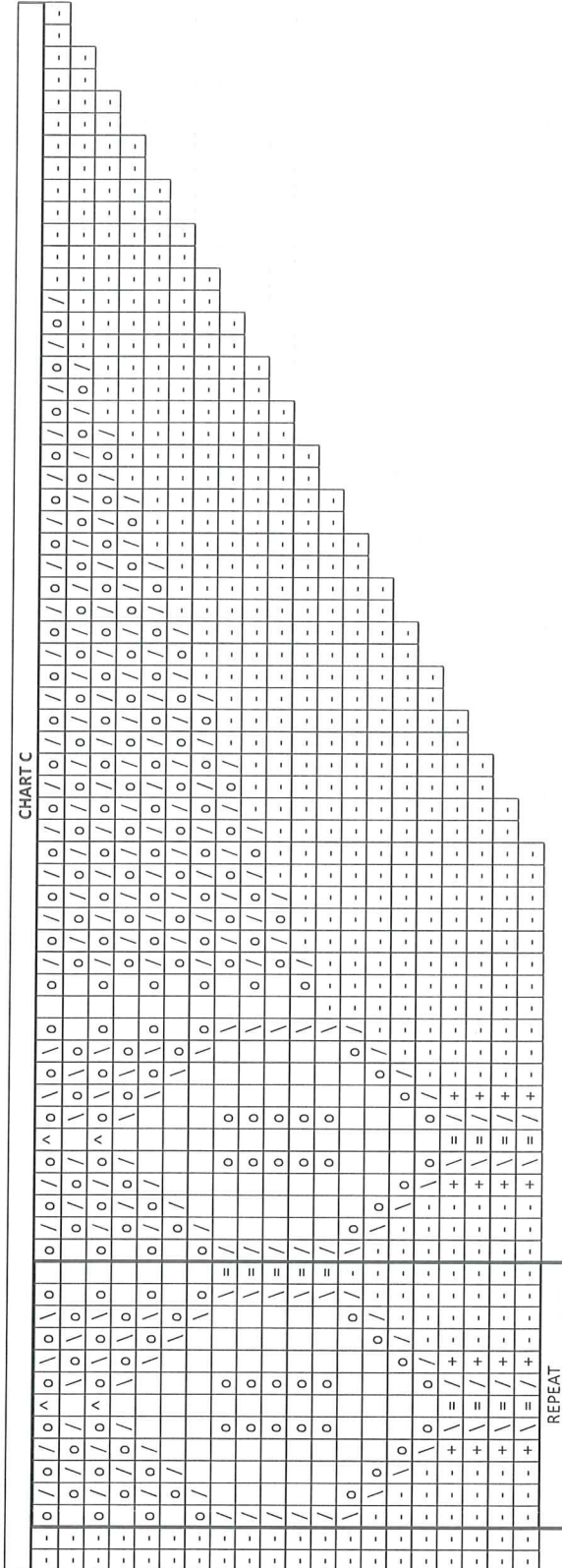
- = knit in RS rows, purl in WS rows
- o = yarn over in RS rows, purl in WS rows
- = = purl in RS and WS rows
- = knit in RS and WS rows
- / = k2tog, purl in WS rows
- \ = ssk, purl in WS rows
- 8 = yarn over in RS rows, pfb in WS rows
- + = yarn over in RS rows, knit into back loop in WS rows
- ^ = sk2togssso, purl in WS rows
- S1 = sts per section
- S2 = total sts



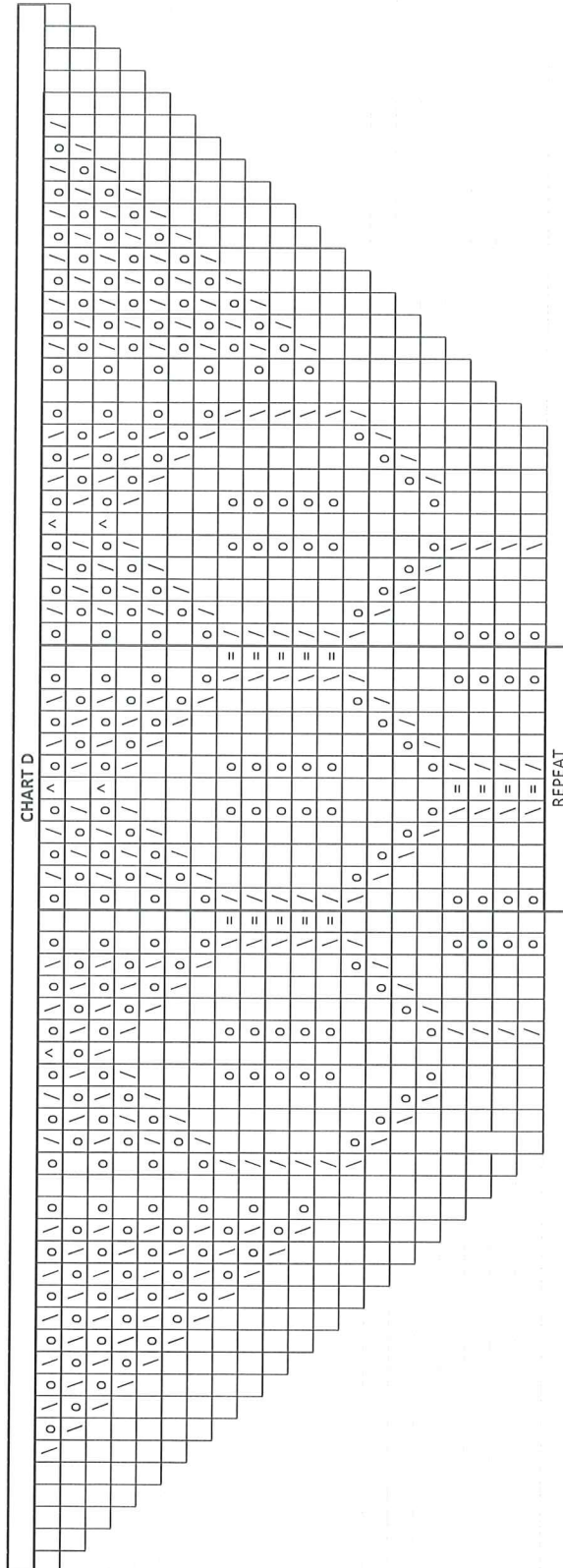
Row	S1	S2
35	45	141
33	35	111
31	33	105
29	31	99
27	29	93
25	27	87
23	25	81
21	23	75
19	21	69
17	19	63
15	17	57
13	15	51
11	13	45
9	11	39



Row	S1	S2
69	93	285
67	77	237
65	75	231
63	73	225
61	71	219
59	69	213
57	67	207
55	65	201
53	63	195
51	61	189
49	59	183
47	57	177
45	55	171
43	53	165
41	51	159
39	49	153
37	47	147



Row	S1	S2
109	131	399
107	129	393
105	127	387
103	125	381
101	123	375
99	121	369
97	119	363
95	117	357
93	115	351
91	113	345
89	111	339
87	109	333
85	107	327
83	105	321
81	103	315
79	101	309
77	99	303
75	97	297
73	95	291
71	93	285



Row	S1	S2
109	131	399
107	129	393
105	127	387
103	125	381
101	123	375
99	121	369
97	119	363
95	117	357
93	115	351
91	113	345
89	111	339
87	109	333
85	107	327
83	105	321
81	103	315
79	101	309
77	99	303
75	97	297
73	95	291
71	93	285

